

A NEW SPECIES OF PREDATORY ROVE BEETLE FROM INDIA (COLEOPTERA : STAPHILINIDAE)*

T. R. KEM

Documentation Entomologist, Directorate of Plant Protection,
Quarantine and Storage, Faridabad

and

SWARAJ GHAI

Systematic Entomologist, I.A.R.I., New Delhi, India

(Received 27 August 1976)

A new species, *Hypocyptus ricini*, predatory on tetranychid mites on castor is described.

In India, the genus *Hypocyptus* MANNERH. is represented by only one species *H. marginalis* CAMERON from Chakrata district. This has also been recorded from Europe, America, Africa, Pakistan and Ceylon. Until now these have been reported from dead bark, fallen leaves, vegetables, debris etc. The second species herein described as new is predatory on tetranychid mites.

***Hypocyptus ricini* sp. nov. (Fig. 1)**

Yellowish black, shining species with finely grey pubescence; head, thorax and elytra yellow; antennae and legs reddish testaceous, the femora a little darker. Head, thorax and elytra practically uniformly punctate. Antennae smaller than head and thorax together, three to seven joints shorter than first and second both, eight-ten forming a club and all glabular in shape, tenth much longer as compared to eight and nine. Thorax fully twice as broad as long, the posterior angles rounded, very finely obsolete, moderately and closely punctured. Elytra broader and about one

half longer than the thorax, sculpture like that on thorax. Abdomen bordered, quite broad, no visible ground sculpture. Wings without apparently visible veins, very heavily fringed at the posterior border and also completely covered with fine hairs. Length 4 mm.

Holotype : Female on slide, on castor leaves along with tetranychid mites, Delhi I.A.R.I. 10-x-1969 TILAK RAM.

Paratype : 2 females, on tag mounted and one on slide bearing the same data. Types in National Pusa Collection, I. A. R. I., New Delhi-110012.

This species is most closely related to *H. gracilicornis* CAMERON from which it is distinguished by its colouration, size, antennae and punctuation of the pronotum and elytra.

Acknowledgement:- The authors express their deep sense of gratitude to the late Dr. S. PRADHAN, the then Head of the Division of Entomology for all the necessary facilities and encouragement.

* This forms part of the M.Sc. (Ento.) dissertation of the senior author.

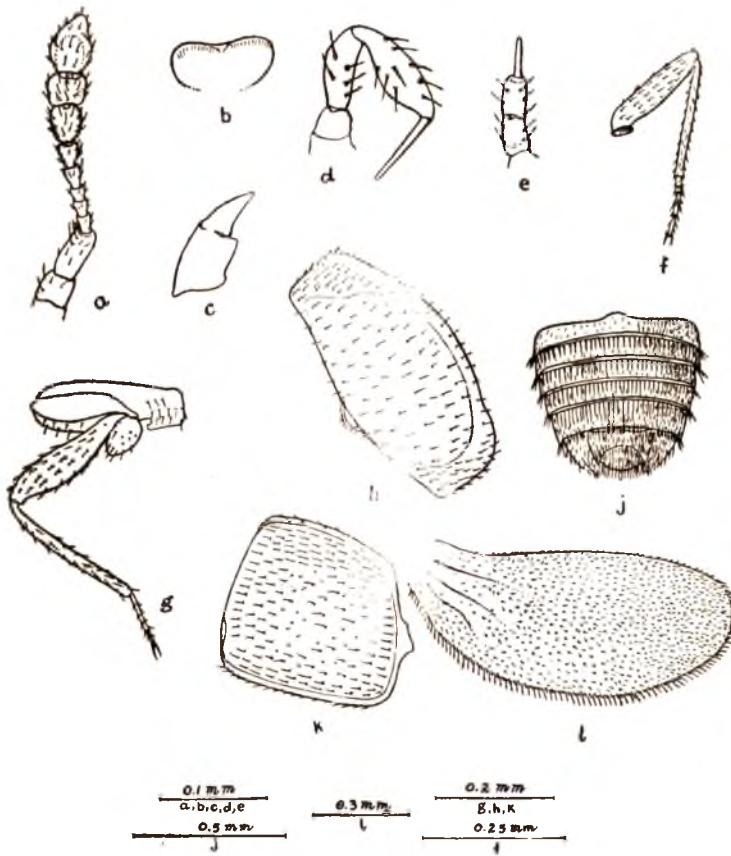


Fig. 1. *Hypocyptus ricini*, sp. nov., a. antenna; b. labrum; c. mandible; d. maxillary palp; e. labial palp; f. foreleg; g. hindleg; h. pronotum; j. portion of abdomen; k. elytra; l. hindwing.